

BUNG RING EXPANDER

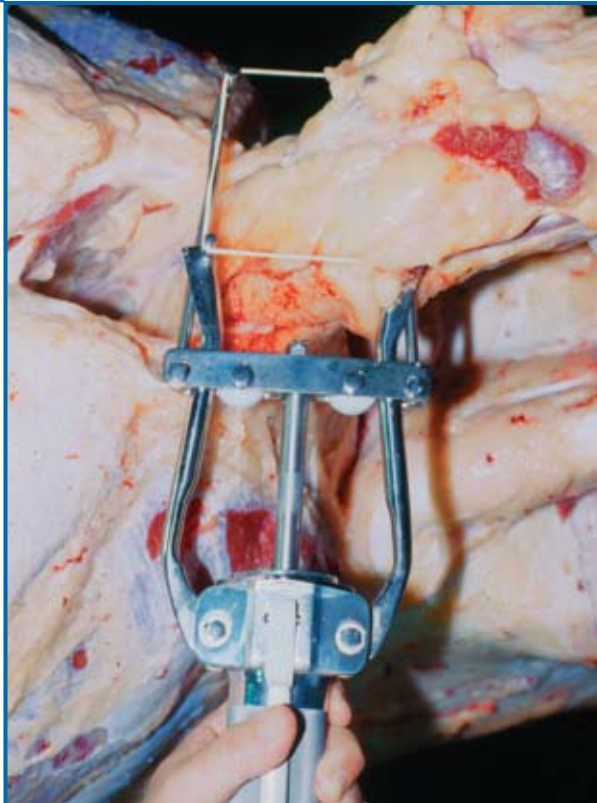
Model BRE-1 and BRE-2



The Jarvis Model BRE-1 or BRE-2 - pneumatically powered bung ring expander.

JARVIS

- Used for expanding and installing bung rings in the beef industry.
- Eliminates contamination from the bung areas by sealing the bung.
- Mechanically seals bung with a ring - reduces human error during binging operation.
- Lightweight and flexible for optimum operator comfort.
- All stainless construction for maximum hygiene.



HYGIENIC - LIGHTWEIGHT - FLEXIBLE

BUNG RING EXPANDER

Model BRE-1 and BRE-2

Specifications

Drive	Pneumatic	
Model BRE-1 and BRE-2		
Operating Pressure	90 -100 psi	6.2 - 6.9 bar
Air Consumption (per cycle at 100 psi / 6.9 bar)	0.026 ft ³	0.74 L
Opening Dimension (expanded)		
BRE-1	3.8 x 3.9 in	97 x 99 mm
BRE-2	4.0 x 4.5 in	102 x 114 mm
Control Handle	Single Trigger	Pneumatic
Overall Length	14 in	356 mm
Overall Width	5.2 in	132 mm
Weight	3.5 lbs	1.6 kg

Equipment Selection and Accessories	Order Number
--	---------------------

Model BRE-1	4021002
Model BRE-2	4021008
Air Hose	length 16 ft / 5m 1059002
Bung Rings (sold per bag of 3,000)	
For BRE-1 0.50 in I.D. x 0.812 in O.D.	1013162
Air Filter / Regulator / Lubricator	3022003
Balancer	4042043
Air Mist Oil	
	1 pt / 0.5 L 1062010
	1 gal / 4 L 1062011
	5 gal / 20 L 1062012



Products for the meat and poultry industry